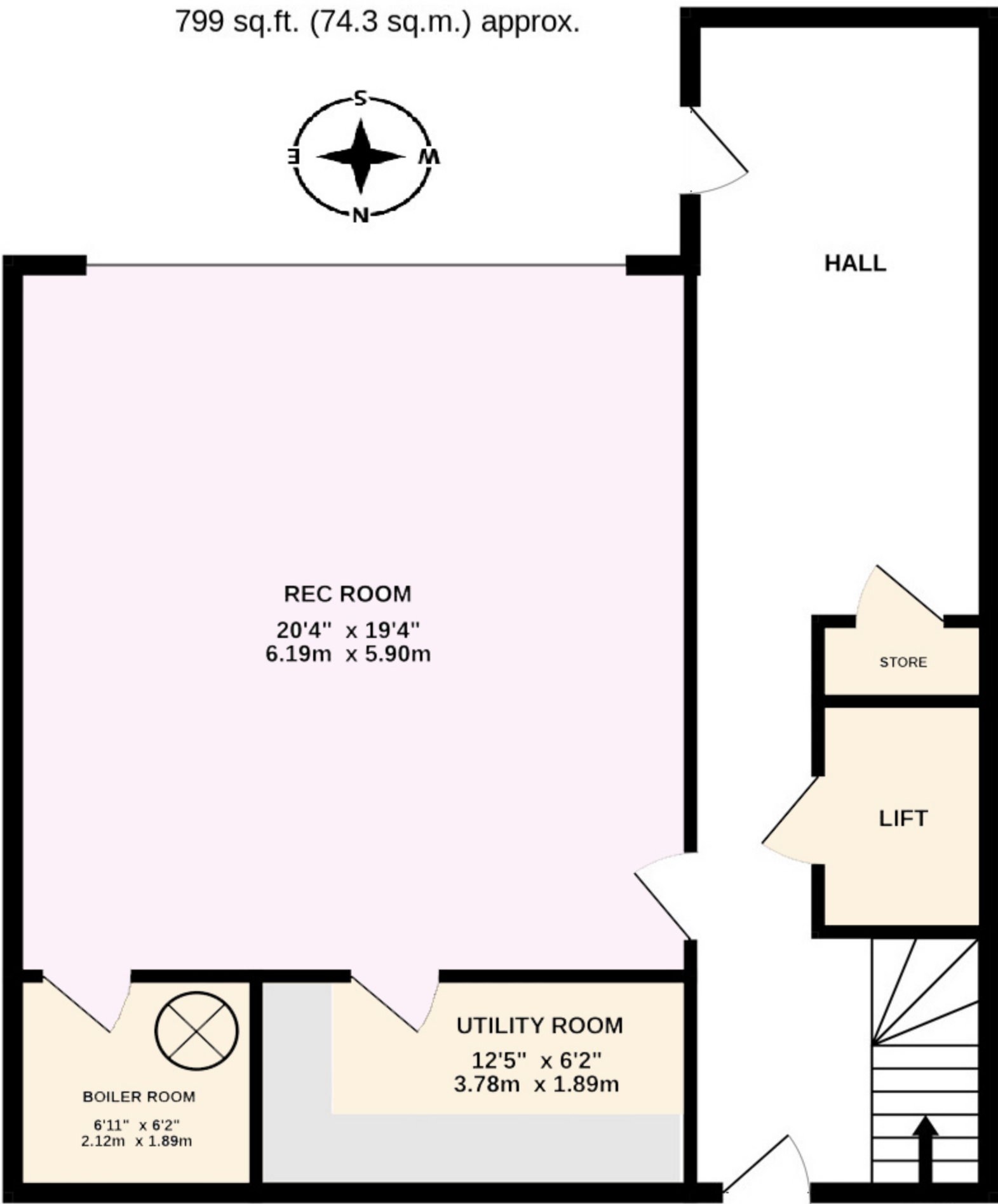


# The Guillemots

TOTAL FLOOR AREA : 2684 sq.ft. (249.4 sq.m.) approx.

## GROUND FLOOR

799 sq.ft. (74.3 sq.m.) approx.



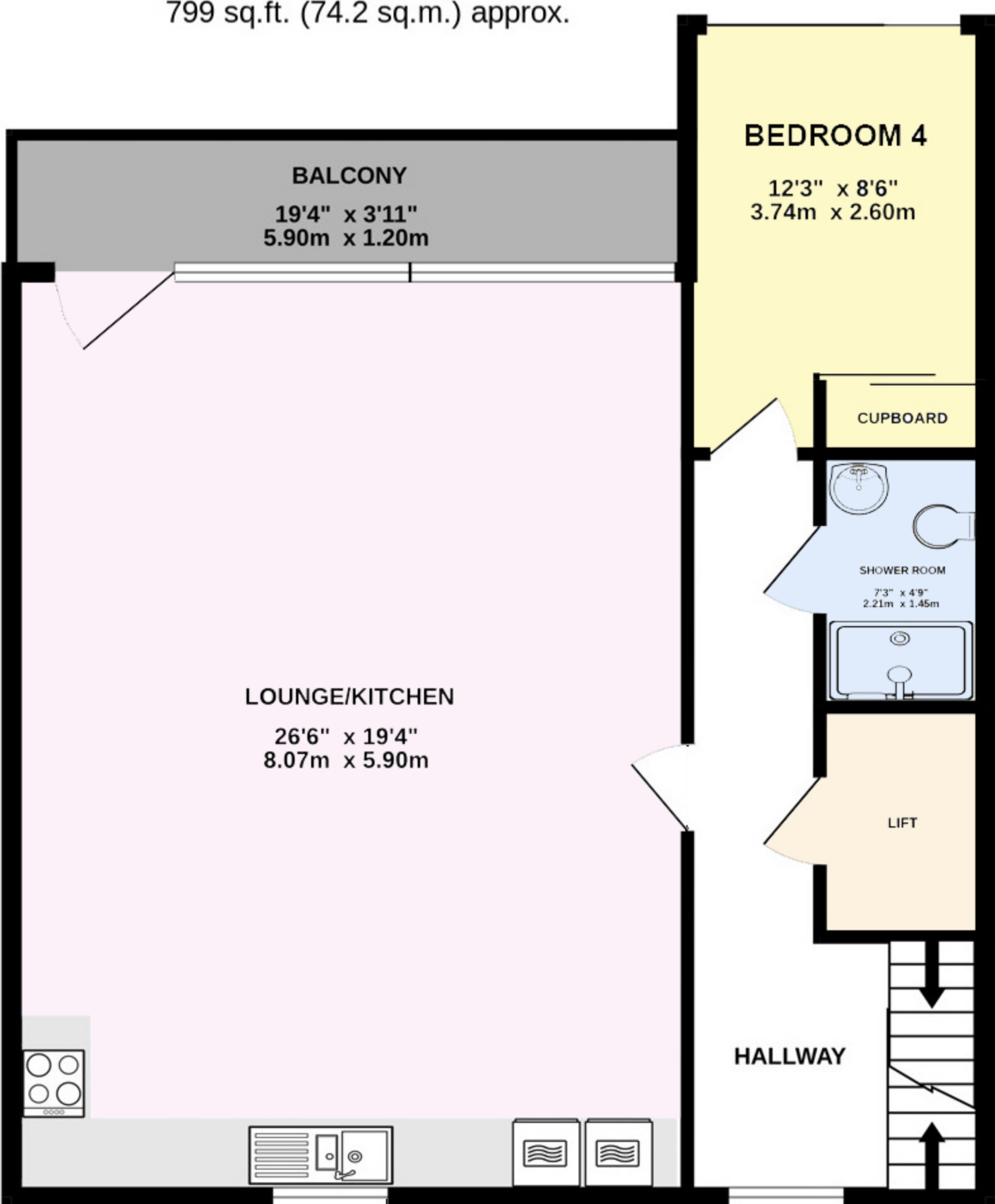
## 1ST FLOOR

799 sq.ft. (74.3 sq.m.) approx.



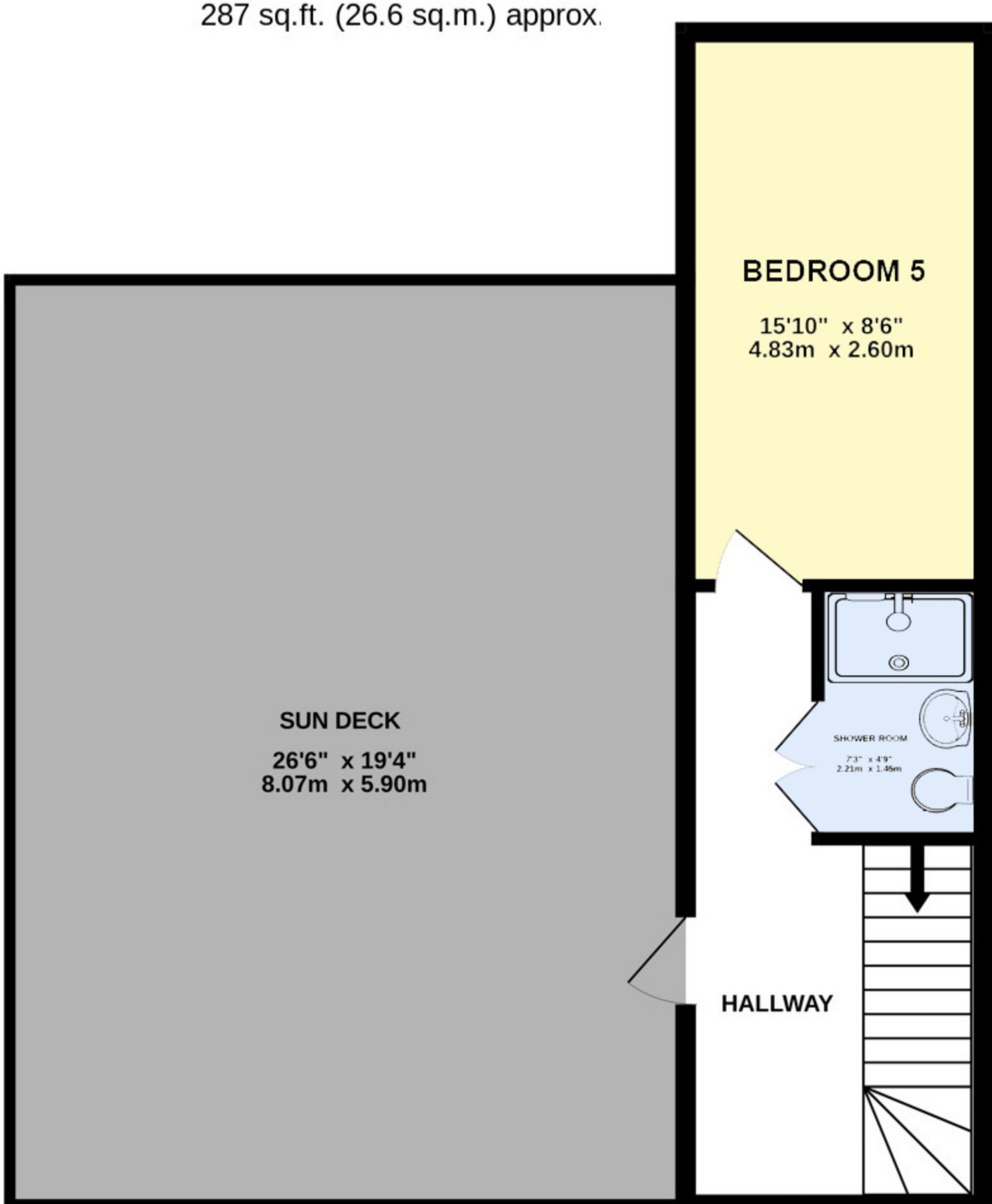
## 2ND FLOOR

799 sq.ft. (74.2 sq.m.) approx.



## 3RD FLOOR

287 sq.ft. (26.6 sq.m.) approx.



**Portwrinkle  
Holidays**

*Established in 1961*

Whilst every attempt has been made to ensure the accuracy of the floor plan contained here, measurements of doors, windows, rooms and any other items are approximate and no responsibility is taken for any error, omission, or mis-statement. This is for illustrative purposes only & should be used as such by any prospective purchaser. The services, systems and appliances shown have not been tested & no guarantee as to their operability or efficiency can be given.

**Created By Tech Surveys Uk Ltd**